

# EUROPEAN CHORAL CLUB SERIES

P.O. Box 9185  
NL 3301 AD Dordrecht  
The Netherlands

phone: +31 (0)78 622 75 47  
email: info@europeanchoralclub.com  
internet: www.europeanchoralclub.com



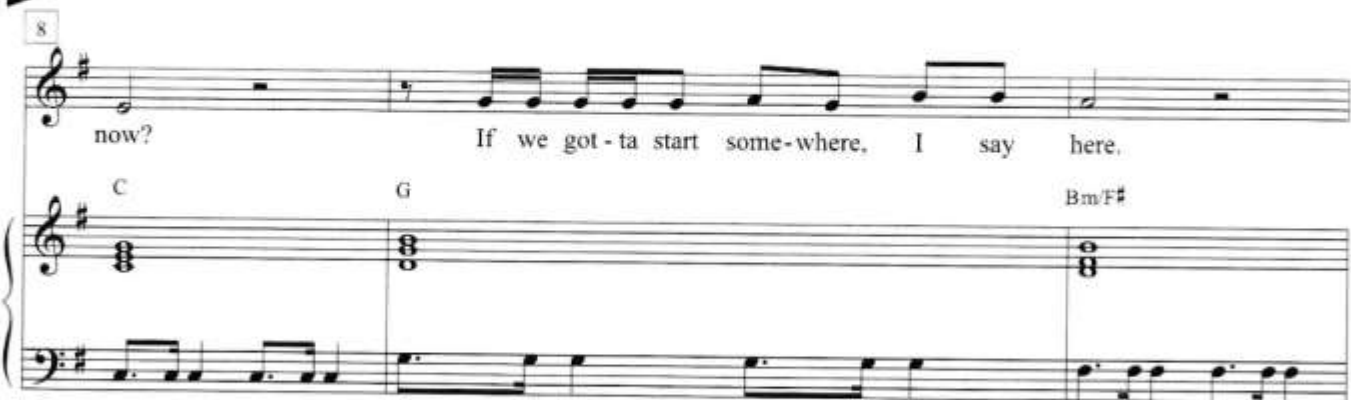
## CITY ON OUR KNEES

Lyrics: Toby McKeehan, Jamie Moore & Cary Barlowe

Music: Toby McKeehan, Jamie Moore & Cary Barlowe  
Arr.: Cliff Duren



Pop Rock ♩ = 76



© 2009 Achtober Songs (adm. at Smallstonemediasongs.com) / Jamnu Music /  
Emack Music / Castle Bound / Bummerman Music



Reproduction of this publication without permission  
of the publisher is a criminal offense subject to prosecution

Duration: 4'26  
ECC17.1375.01H

11

If we got - ta start some - time, I say now.

Em C

13

*building*

Through the fog, there is hope in the dis - tance; from ca - the - drals to third world mis - sions.

Am Em

15

Love will fall to the earth like a crash - ing wave. To - night's the night

*CHOIR*  
*f*

*mel.*

G D

17

for the sin-ners and the saints. Two worlds col-lide in a beau-ti-ful dis-play.

G D Em

20

It's all up to-night when we step a-cross the line, when we sail a-cross the sea.

*mf*

C G D

23

to a cit-y with one King. A cit-y on our knees.

Em C G

26

*SOLO* *mf*

A cit-y on\_ our knees. Woh, woh.

D Em C

29

*CHOIR* *mp*

If you got - ta start some - where, why not here?

G Bm

*mp*

31

If you got - ta start some - time, why not now?

Em C

33

If we got - ta start some - where, I say here.

G Bm

35

If we got - ta start some - time, I say now...

Em C

37

*building*  
Through the fog, there is hope in the dis - tance; from ca - the - drals to third world mis - sions.

Am Em

39

Love will fall to the earth like a crash - ing wave. To - night's the night—

G D

41

— for the sin - ners and the saints. — Two worlds col - lide — in a beau - ti - ful dis - play.

G D Em

44

— It's all up to - night — when we step a - cross the line, — when we sail a - cross the sea.

C G D

47

to a cit-y with one — King. A cit-y on — our knees.

Em C G

50

A cit-y on — our knees. Woh, — woh — To —

D Em C

*mp*

53

night couldn't last for - ev - er. We are one choice from to - geth - er. To -

G D/F#

*mp*

55

*building*

night could-n't last for-ev - er.

To-night could-n't last for-ev - er. We are

G/F C2 G

58

one choice from to - geth - er as fam - i - ly.

We're fam - i - ly.

G/F# G/F

60

To - night could-n't last for - ev - er. We are

C2 G *building*



62

one choice from to - geth - er; you and me. You and me!

The vocal line consists of three measures. The first measure contains the lyrics 'one choice from to - geth - er;'. The second measure contains 'you and me.'. The third measure contains 'You and me!'. The melody is in a G major key signature and features a mix of eighth and quarter notes.

G/F# G/F C2

The piano accompaniment for measures 62-64. The right hand features block chords for G/F#, G/F, and C2. The left hand has a rhythmic pattern of eighth notes.

65

To-night's the night — for the sin - ners and the saints. — Two worlds col - lide.

The vocal line consists of three measures. The first measure contains the lyrics 'To-night's the night —'. The second measure contains 'for the sin - ners and the saints. —'. The third measure contains 'Two worlds col - lide.'. The melody is in a G major key signature and features a mix of eighth and quarter notes.

G D

The piano accompaniment for measures 65-67. The right hand features block chords for G and D. The left hand has a rhythmic pattern of eighth notes. A forte (*ff*) dynamic marking is present.

68

in a beau - ti - ful dis - play. — It's all up to - night — when we step a - cross the line.

The vocal line consists of three measures. The first measure contains the lyrics 'in a beau - ti - ful dis - play. —'. The second measure contains 'It's all up to - night —'. The third measure contains 'when we step a - cross the line.'. The melody is in a G major key signature and features a mix of eighth and quarter notes.

Em C G

The piano accompaniment for measures 68-70. The right hand features block chords for Em, C, and G. The left hand has a rhythmic pattern of eighth notes.

71

*mf*

when we sail a - cross the sea to a cit - y with one

D Em

73

— King. A cit - y on our knees. A cit - y on our

C G D

76

knees. Woh woh A cit - y on our knees.

Em C G

79

A cit-y on\_ our knees. Woh, woh\_

D Em C

82

*mp*  
If you got - ta start some - where, why not here?

G D F#  
*mp*

84

If you got - ta start some - time, why not now?

Em C2